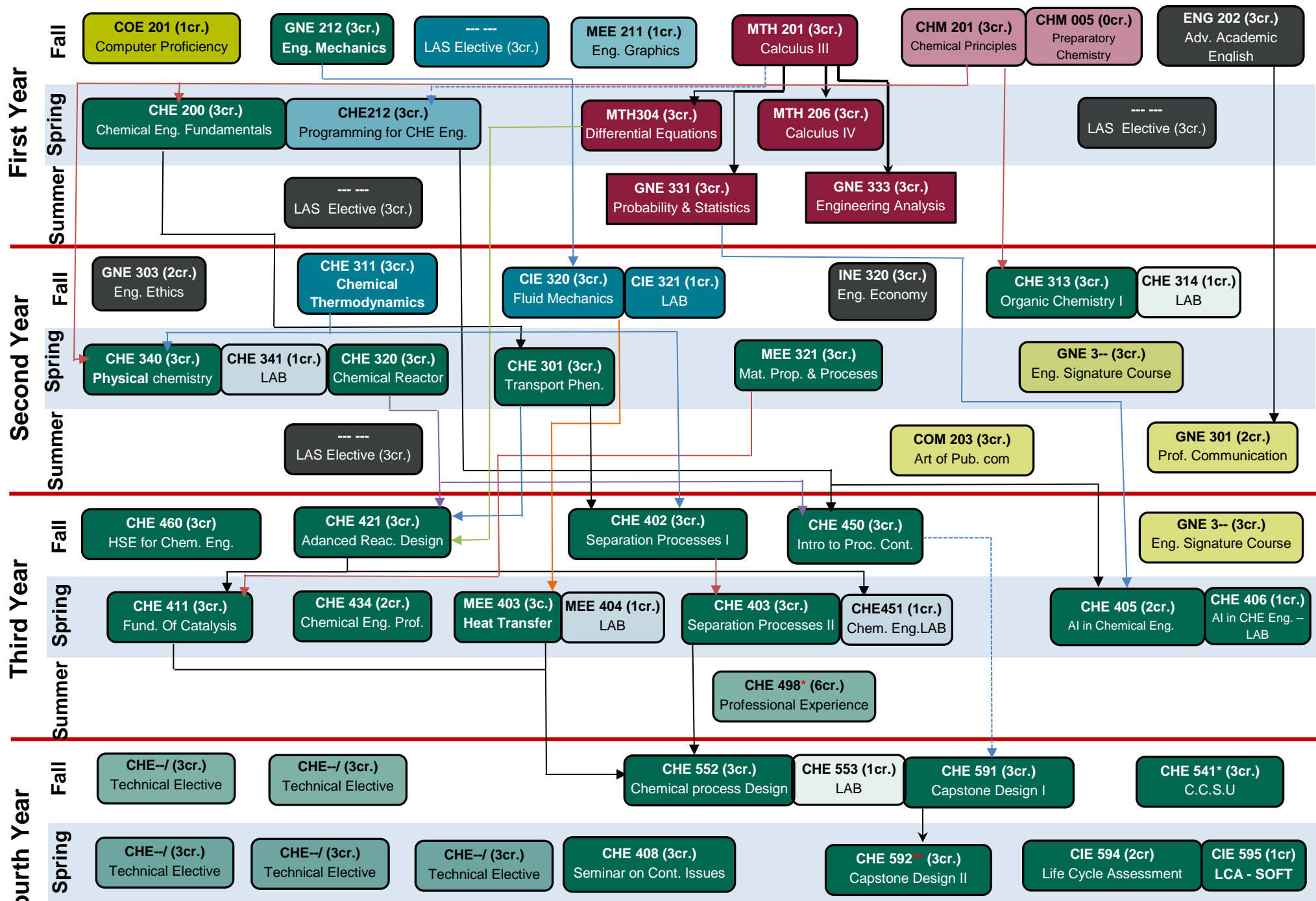


BE Chemical Engineering Program Flowchart



Collated blocks indicate co-requisite courses

→ arrows indicate a prerequisite course.

---→ arrows indicate a co-requisite course.

Elective courses: 120 credits + consent of instructor + pre-requisite if any (Check CHE Catalog)

[^]90 credits, ^{*}120 credits, ^{**}150 credits

^{*}CHE 498 Prerequisite: CHE434, CHE403, CHE460, CHE421 and either CHE411 or CHE450

^{**} CHE 591 Prerequisites: Fifth-year standing

All Labs have GNE331 prerequisite except for MEE312.