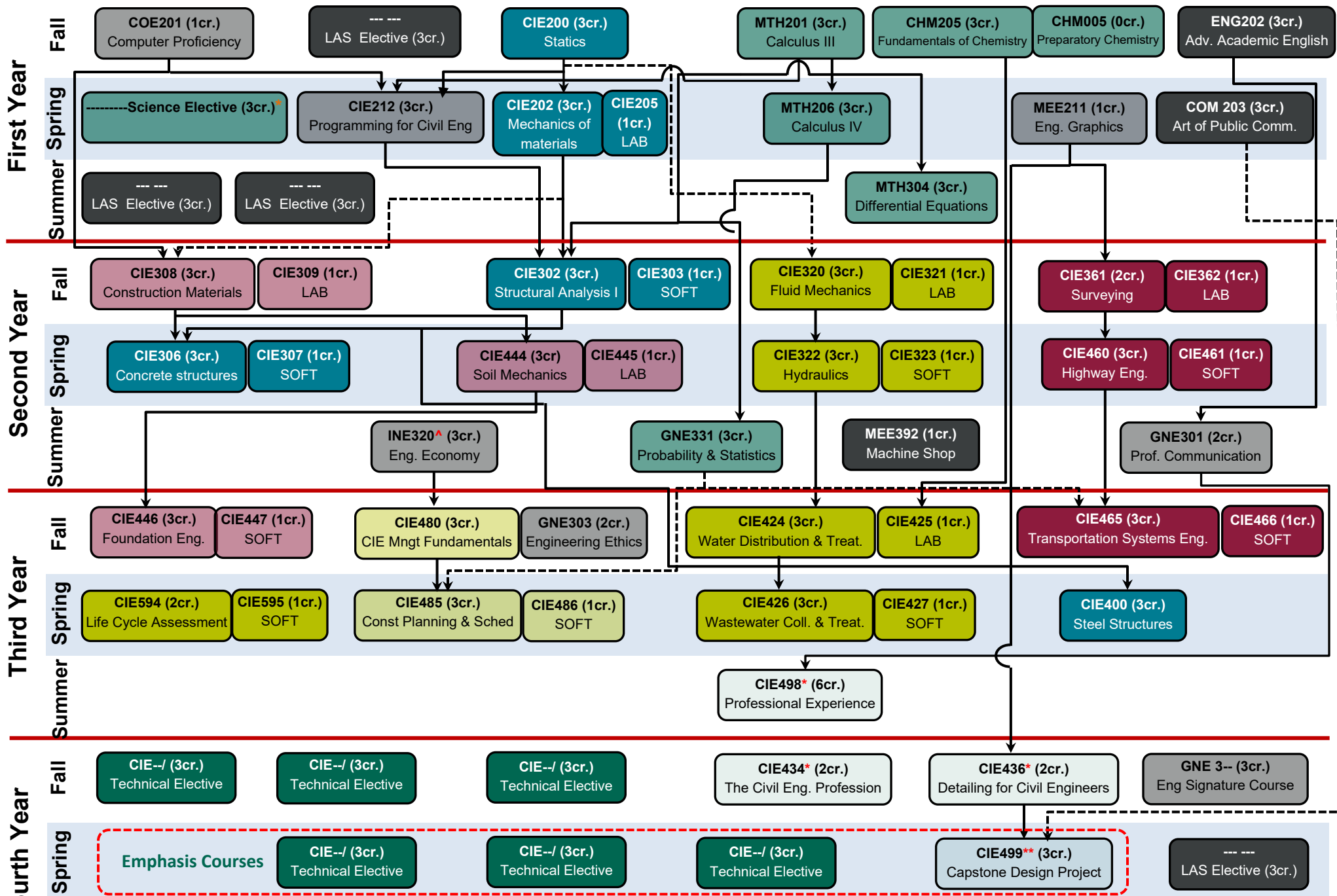


BE Civil Engineering Program Flowchart#



Collated blocks indicate co-requisite courses

Both arrows indicate a prerequisite course

Elective courses: 120 credits + consent of instructor + pre-requisite if any (Check CIE Catalog)
 *The Science Elective can be selected from BIO200, BIO203 or other approved Science Elective
 **120 credits + consent of instructor, **150 credits + consent of instructor, ^90 credits
 #Passing grade on all CIE and MTH courses is D