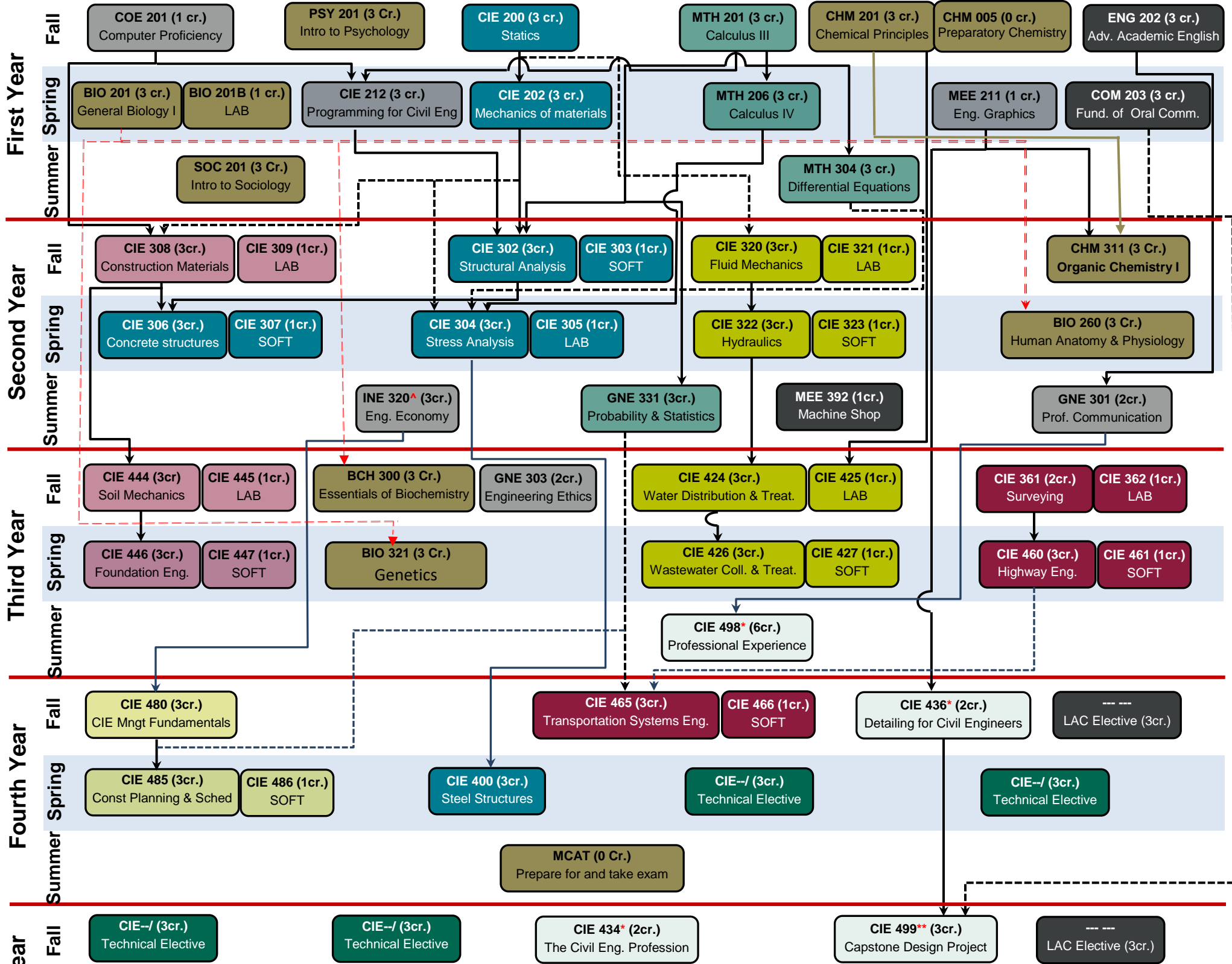


# BE Civil Engineering Pre-MED Program Flowchart#



Collated blocks indicate co-requisite courses

Both arrows indicate a prerequisite course

Elective courses: 120 credits + consent of instructor + pre-requisite if any (Check CIE Catalog)  
 \*120 credits + consent of instructor, \*\*150 credits + consent of instructor, <sup>^</sup>90 credits  
 #Passing grade on all CIE and MTH courses is D