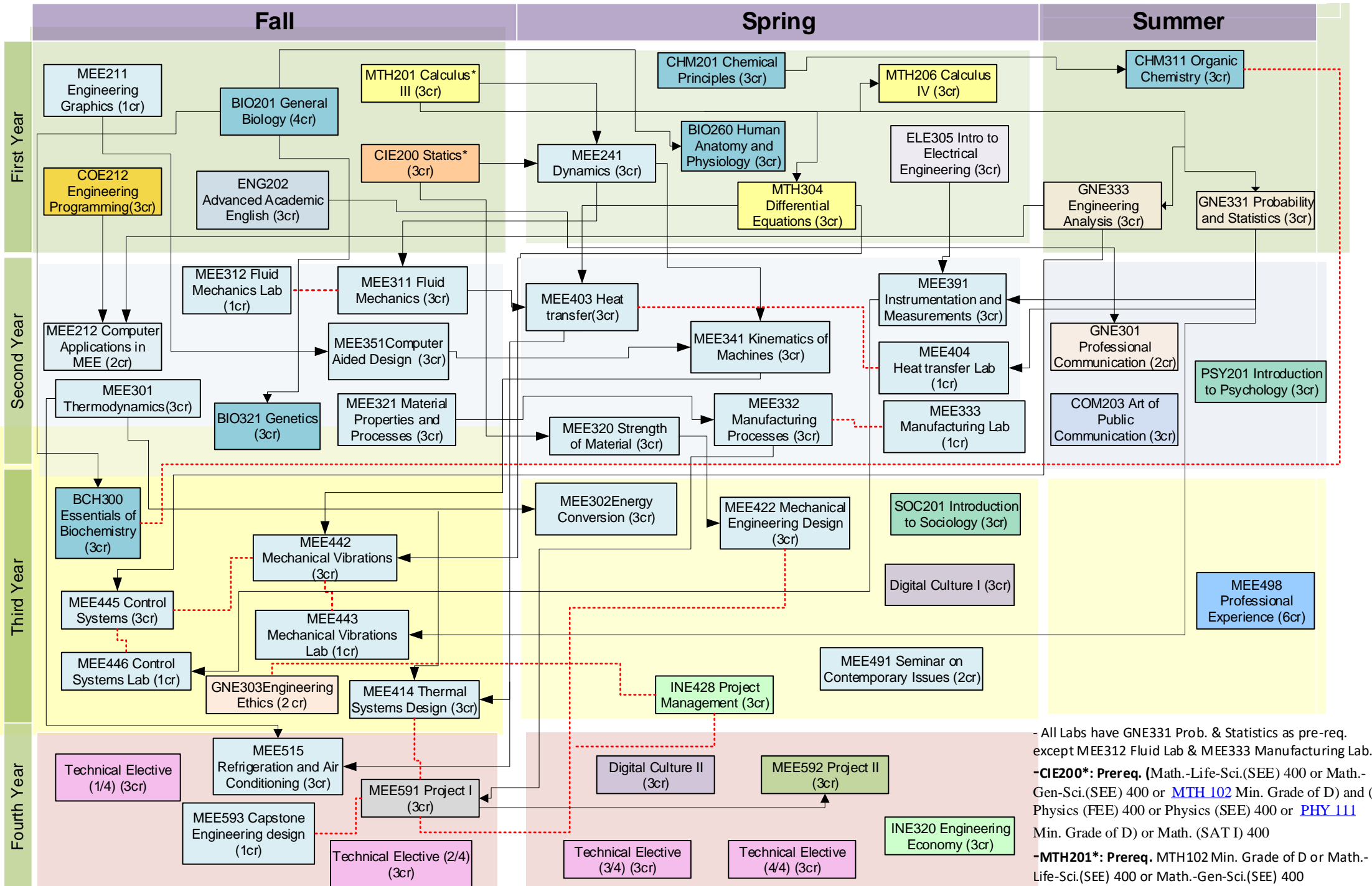


# Mechanical Engineering Four-Year Program (with Pre-Med Track)



- All Labs have GNE331 Prob. & Statistics as pre-req. except MEE312 Fluid Lab & MEE333 Manufacturing Lab.  
**-CIE200\*:** Prereq. (Math.-Life-Sci.(SEE) 400 or Math.-Gen-Sci.(SEE) 400 or [MTH 102](#) Min. Grade of D) and (Physics (FEE) 400 or Physics (SEE) 400 or [PHY 111](#) Min. Grade of D) or Math. (SAT I) 400  
**-MTH201\*:** Prereq. MTH102 Min. Grade of D or Math.-Life-Sci.(SEE) 400 or Math.-Gen-Sci.(SEE) 400