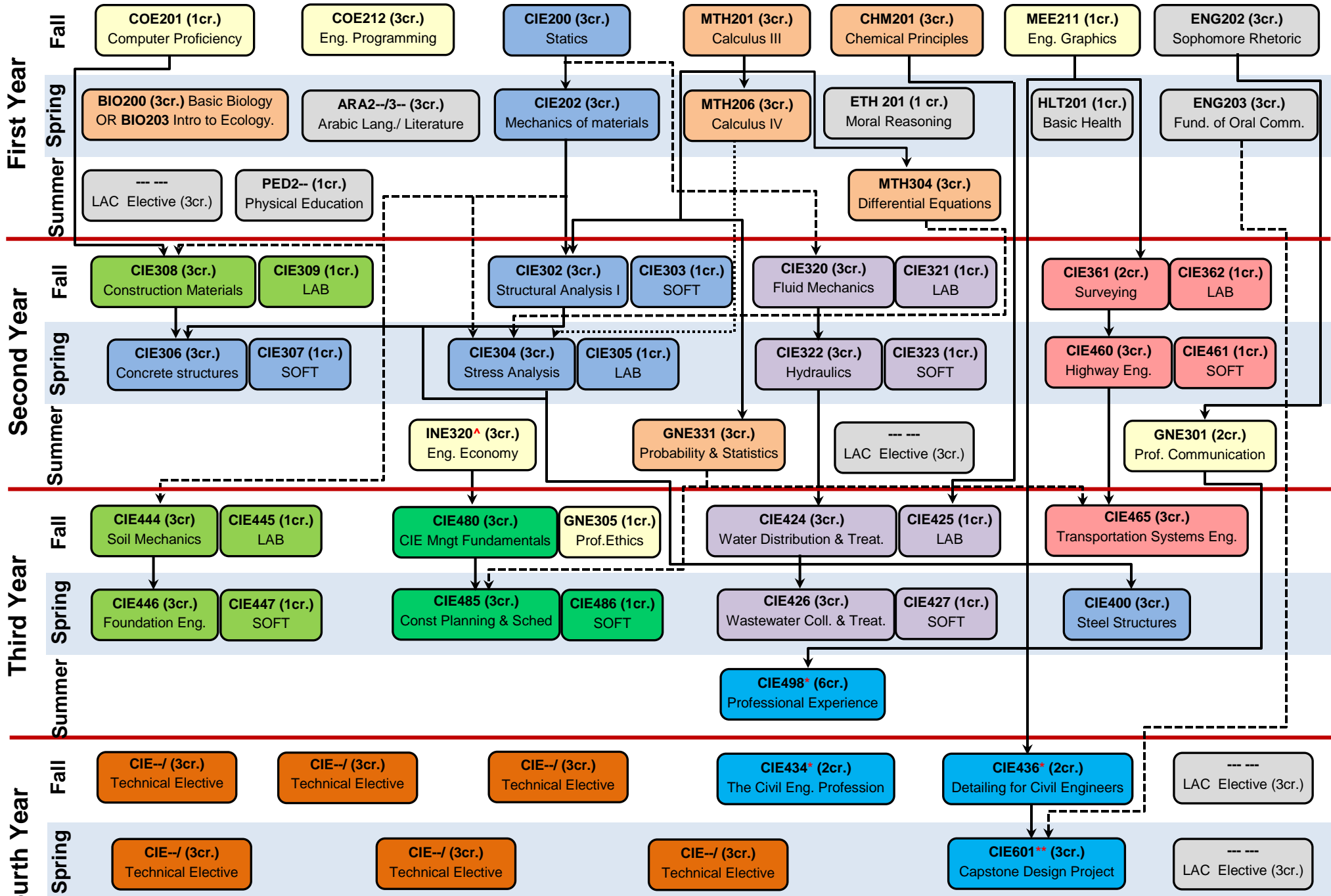


Civil Engineering Program Flowchart[#]



Collated blocks indicate co-requisite courses

Both arrows indicate a prerequisite course

Elective courses: 120 credits + consent of instructor + pre-requisite if any (Check CIE Catalog)
 *120 credits + consent of instructor, **150 credits + consent of instructor, [^]90 credits
[#]Passing grade in all CIE and MTH courses is a 'C'