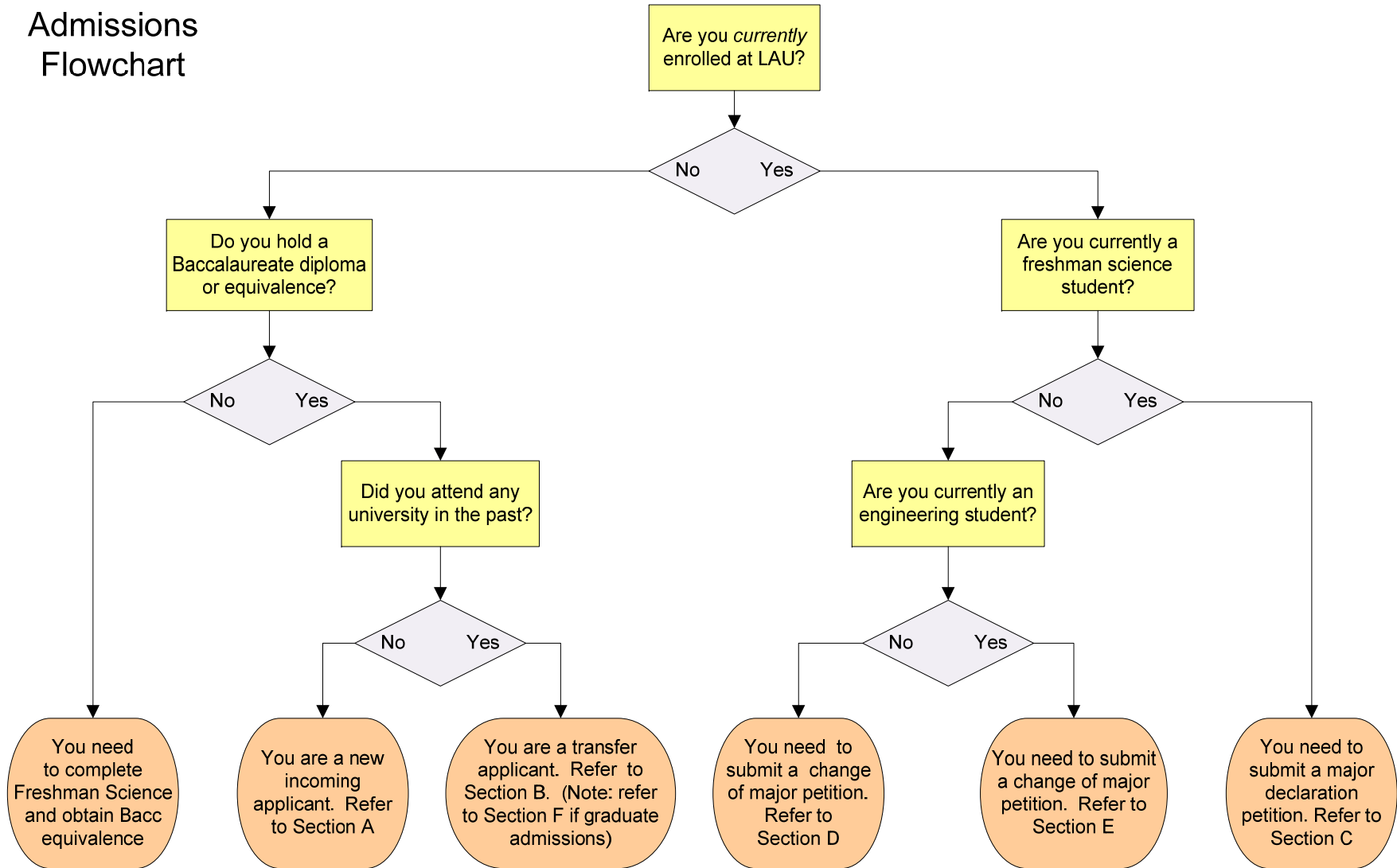


SoE Admissions Quick Guide

For Applicants & Students

Last Updated: October 2019

SOE Admissions Flowchart



A. New Incoming Applicants to Engineering Programs

These are the criteria and standards for new applicants to the undergraduate engineering programs:

Criteria

1. Scores on English exam as per university regulations.
2. Scores on the SAT I exam.
3. Grades on the last three years of school.
4. Scores on one of the following Official Exams: Lebanese Baccaureate or equivalent, French Baccaureate, International Baccaureate, and A-Levels.

Deadlines

Follow application deadlines as set by Admissions Offices.

Standards

1. Math and ERW sections of the SAT I exam are considered.
2. Depending on the type of program in high school:
 - a. Scientific Lebanese and French Baccaureate Requirements: GS or LS Lebanese Baccaureate, or Math, Physics-Chemistry, or Biology French Baccaureate is required. Applicant is accepted conditionally pending a PASS on the exam. FAIL on the exam will dismiss the applicant.
 - b. Economics Lebanese and French Baccaureate Requirements: applicants with ES Baccaureates cannot directly apply to engineering majors, but are allowed to submit change of major / major declaration petitions into engineering after taking the four math and basic science courses of the freshman year (namely MTH101, MTH102, PHY111, and CHM101) and obtaining a minimum of “B-” in each of the three courses: MTH102, PHY111, and CHM101 (for the general petition conditions, refer to Standard 5 of Section D).
 - c. Non-Scientific Lebanese and French Baccaureate Requirements: Applicants with non-scientific baccaureates (e.g. Humanities) are not accepted into engineering programs.
 - d. International Baccaureate (IB) Requirements: applicants must have taken high levels (HL) in Math for two years. Furthermore, applicants must have a minimum of standard levels (SL) in Physics and another basic science subject for two years (high-levels in these subjects are highly desirable).
 - e. A-Levels Requirements: applicants must have full A-levels (AS + A2) in Math. Furthermore, applicants must have a minimum of AS level in Physics and another basic science subject (full A-levels in these subjects are highly desirable).
 - f. Requirements for other high school programs / official exam types are equivalent to the Lebanese Baccaureate requirements.
 - g. Students can be accepted on a Conditional Admission (CA) basis. Please contact an advisor from the School of Engineering for the CA requirements.

B. Transfer Applications

These are the criteria and standards for non-LAU students applying to LAU engineering programs:

Criteria

1. All criteria of Section A apply.
2. Transcripts at all universities attended prior to LAU.

Deadlines

Follow application deadlines as set by Admissions Offices.

Standards

Applicant should be in good academic standing at all universities prior to applying to LAU.

C. Petitions Pertaining to Major Declarations:

These are the criteria and standards from freshman students who want to declare major into engineering:

Criteria

1. All criteria of Section A apply.
2. The petition must be accompanied by an updated LAU transcript.

Deadlines

The deadline for submitting a petition is the end of the second week of each term (Fall, Spring, Summer I, and Summer II terms).

Standards

1. Freshman Arts students cannot apply to engineering majors; only Freshman Science students are eligible.
2. Students must have followed a scientific curriculum in their last two years of high schools prior to their freshman year.
3. Students must fully complete their freshman science requirements before submitting a major declaration petition.
4. Students must have an overall GPA of 2.0 or above and have obtained grades of "B-" or above in each of the following courses: MTH102, CHM101, and PHY111.
5. The decision taken on the petition takes into account the entire record of the petitioner, including high school performance, entrance exam grades, transcripts at all universities attended, as well as taking into consideration the number of repeated courses, "W", and "F" grades obtained.

D. Petitions Pertaining to Major Transfers from Non-Engineering to Engineering:

These are the criteria and standards for currently enrolled non-engineering students who wish to transfer into an engineering program:

Criteria

1. All criteria of Section A apply.
2. The petition must be accompanied by an updated transcript.

Deadlines

The deadline for submitting a petition is the end of the second week of each term (Fall, Spring, Summer I, and Summer II terms).

Standards

1. All standards of Section A apply.
2. Student must have an overall GPA of 2.0 or above.
3. Student must have obtained a grade of “B” or above in one sophomore-level math course.
4. Student must have obtained a grade of “B” or above in one sophomore-level science course.
5. The decision taken on the petition takes into account the entire record of the petitioner, including high school and official exam performance, entrance exam grades, transcripts at all universities attended, as well as taking into consideration the number of repeated courses, “W”, and “F” grades obtained.

Note: non-engineering students cannot register for 300-level or above engineering courses unless approved by the corresponding department.

E. Petitions Pertaining to Major Transfers within Engineering:

These are the criteria and standards for currently enrolled engineering students who wish to change majors within engineering:

Criteria

The petition must be accompanied by an updated transcript.

Deadlines

The deadline for submitting a petition is the end of the second week of each term (Fall, Spring, Summer I, and Summer II terms).

Standards

1. To be eligible for a change of major, students must have an overall GPA of 2.0 or above, and must have met the Conditional Admission (CA) requirements, if applicable. Please contact your advisor for the CA requirements.
2. Petition should only be for transfer requests and should not include requests for course substitutions, course transfers, or curriculum selections.
3. The decision taken on the petition takes into account the entire record of the petitioner, including high school and official exam performance, entrance exam grades, transcripts at all universities attended, as well as taking into consideration the number of repeated courses, “W”, and “F” grades obtained.

Note: engineering students cannot register for 400-level courses or above in a different major unless allowed by their program curriculum.

F. Graduate Admissions to Engineering Majors:

These are the criteria and standards for applicants to the graduate engineering programs:

Criteria

1. Scores on the GRE exam.
2. Other admissions criteria for applicants applying to M.S. engineering programs, such as accepted undergraduate grades and GRE scores, as well as any additional requirements are left to be set by individual departments. Applicants should refer to the corresponding department.

Deadlines

Follow application deadlines as set by Admissions Offices.

Standards

1. Require the GRE admissions exam from all applicants who received their undergraduate engineering diplomas from institutions other than LAU. I.e. to be processed, applications of non-LAU applicants must be accompanied by their GRE score.
2. Require all applicants who received their undergraduate engineering diploma from LAU to take the GRE exam prior to completing their first nine credits of graduate studies at LAU.