

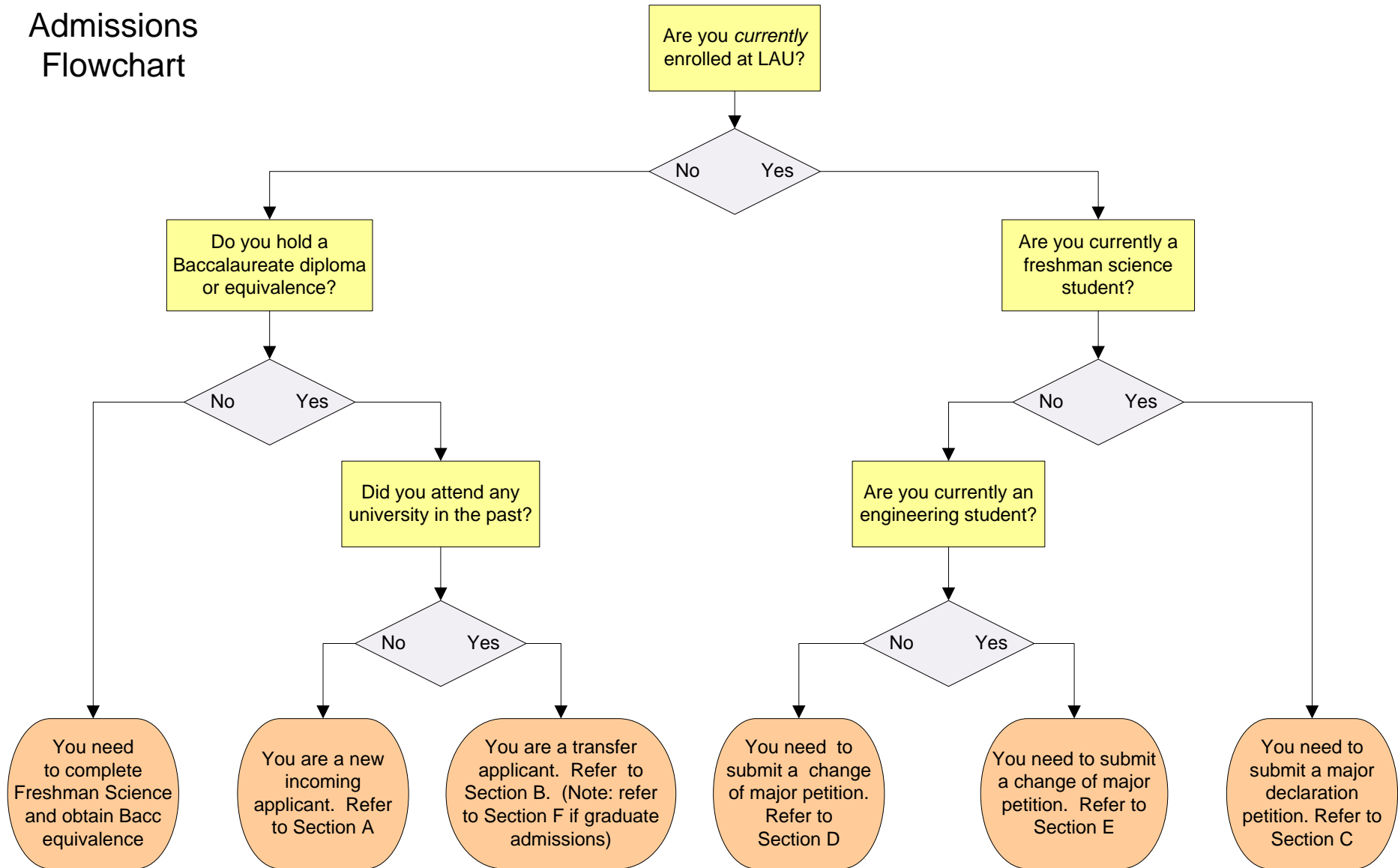
# SoE Admissions Quick Guide

---

For Applicants & Students

Last Updated: November 2021

# SOE Admissions Flowchart



## A. New Incoming Applicants to Engineering Programs

These are the criteria and standards for new applicants to the undergraduate engineering programs:

### Criteria

1. Scores on English exam as per university regulations.
2. Scores on the SAT I exam.
3. Grades on the last three years of school (Grade 12 grades must be reported if application is submitted after first school trimester)
4. Scores on one of the following Official Exams: Lebanese Baccalaureate or equivalent, French Baccalaureate, International Baccalaureate, and A-Levels. Applicants are accepted conditionally pending a PASS on the official exams. FAIL on the exams will dismiss the applicant.

### Deadlines

Follow application deadlines as set by Admissions.

### Standards

1. Math and ERW sections of the SAT I exam are considered.
2. The following types of programs in high school are considered for direct admission:
  - a. Lebanese Baccalaureate with GS or LS
  - b. French Baccalaureate with specialty in either Math-Physics/Chemistry, Math-SVT(Biology). Applicants with SVT-Physics/Chemistry specialty may apply and remedial courses in Math will be specified.
  - c. International Baccalaureate with high levels (HL) in Math and a minimum of standard levels (SL) in Physics in Grade 10 and Grade 11. Standard levels (SL) in Chemistry is desirable if applying to some engineering fields. (High levels in all basic science subjects are highly desirable)
  - d. A-Level Diplomas with full A-levels (AS + A2) in Math and a minimum of AS level in Physics in at least Grade 10 and Grade 11. AS level in Chemistry is desirable if applying to some engineering fields. (Full A-levels in these subjects are highly desirable).
  - e. Requirements for any other high school program/official exam type are equivalent to the Lebanese Baccalaureate requirements.
3. Applicants with ES Lebanese Baccalaureate or equivalent cannot directly apply to engineering majors, but are allowed to submit change of major / major declaration petitions into engineering after taking four math and basic science courses of the freshman year (namely MTH101, MTH102, PHY111, and CHM101) and obtaining a minimum of "B-" in each of the three courses: MTH102, PHY111, and CHM101 (for the general petition conditions, refer to Standard 5 of Section D).
4. Applicants with non-scientific Lebanese Baccalaureates or equivalent (e.g. Humanities) are not accepted into engineering programs.
5. Students can be accepted on a Conditional Admission (CA) basis. CA students must meet these [requirements](#) by the end of the first academic year to enter the regular program in Engineering.

## B. Transfer Applications

Following are the criteria and standards for non-LAU students applying to LAU engineering programs.

### Criteria

1. All criteria of Section A apply.
2. Transcripts at all universities attended prior to LAU.

### Deadlines

Follow application deadlines as set by Admissions.

### Standards

Applicant should be in good academic standing at all universities prior to applying to LAU.

## C. Petitions Pertaining to Major Declarations

Following are the criteria and standards for freshman students who want to declare major into engineering.

### Criteria

1. All criteria of Section A apply.
2. The petition must be accompanied by an updated LAU transcript.

### Deadlines

The deadline for submitting a petition is the end of the second week of each term (Fall, Spring, Summer I, and Summer II terms).

### Standards

1. Freshman Arts students cannot apply to engineering majors; only Freshman Science students are eligible.
2. Students must have followed a scientific curriculum in their last two years of high schools prior to their freshman year.
3. Students must fully complete their freshman science requirements before submitting a major declaration petition.
4. Students must have an overall GPA of 2.0 or above and have obtained grades of “B- ” or above in each of the following courses: MTH102, CHM101, and PHY111.
5. The decision taken on the petition considers the entire record of the petitioner, including high school performance, entrance exam grades, transcripts at all universities attended, as well as taking into consideration the number of repeated courses, “W” and “F” grades obtained.

## D. Petitions Pertaining to Major Transfers from Non-Engineering to Engineering

Following are the criteria and standards for currently enrolled non-engineering students who wish to transfer into an engineering program.

## Criteria

1. All criteria of Section A apply.
2. The petition must be accompanied by an updated transcript.

## Deadlines

The deadline for submitting a petition is the end of the second week of each term (Fall, Spring, Summer I, and Summer II terms).

## Standards

1. All standards of Section A apply.
2. Student must have an overall GPA of 2.0 or above.
3. Student must have obtained a grade of “B” or above in one sophomore-level math course.
4. Student must have obtained a grade of “B” or above in one sophomore-level science course.
5. The decision taken on the petition considers the entire record of the petitioner, including high school and official exam performance, entrance exam grades, transcripts at all universities attended, as well as taking into consideration the number of repeated courses, “W” and “F” grades obtained.

Note: non-engineering students cannot register for 300-level or above engineering courses unless approved by the corresponding department.

## E. Petitions Pertaining to Major Transfers within Engineering

Following are the criteria and standards for currently enrolled engineering students who wish to change majors within engineering.

### Criteria

The petition must be accompanied by an updated transcript.

### Deadlines

The deadline for submitting a petition is the end of the second week of each term (Fall, Spring, Summer I, and Summer II terms).

### Standards

1. To be eligible for a change of major, students must have an overall GPA of 2.0 or above, and must have met the Conditional Admission (CA) [requirements](#), if applicable.
2. Petition should only be for transfer requests and should not include requests for course substitutions, course transfers, or curriculum selections.
3. The decision taken on the petition considers the entire record of the petitioner, including high school and official exam performance, entrance exam grades, transcripts at all universities attended, as well as taking into consideration the number of repeated courses, “W” and “F” grades obtained.

Note: engineering students cannot register for 400-level courses or above in a different major unless allowed by their program curriculum.

## F. Applicants to the ENPMED Track

This track is highly competitive, and admission is granted only on a selective basis. The following provides a list of conditions to apply to this track but does not guarantee acceptance.

### Criteria

1. New students from high-school; in addition to criteria of Section A, applicant should have maintained an average above of 14/20 on Math and Sciences during their last three years of high-school to be able to apply.
2. Current SOE students should have a GPA of 3.5 to be able to apply. If the student has finished less than 30 credits, then the rule for new students is also applicable.
3. Current LAU students from outside SOE; in addition to criteria of Section A and Section B, applicant should have a GPA of 3.5. If the student has finished less than 30 credits, then the rule for new students is also applicable.
4. Current LAU Freshman Science students; in addition to criteria of Section A and Section C, applicant should have a minimum GPA of 3.0 to be able to apply.

### Deadlines

Follow application deadlines as set by Admissions.

## G. Graduate Admissions to Engineering Majors

Following are the criteria and standards for applicants to the graduate engineering programs.

### Criteria

Admission is granted, only, on a selective basis. Applicants must have a Bachelor of Science in Engineering, or a Bachelor of Engineering, Degree from an accredited college or university, with a minimum general Grade Point Average (GPA) as set by the respective program.

Candidates must submit complete applications to Admissions consisting of:

- Statement of purpose (not to exceed one page)
- Official transcripts
- Curriculum vitae
- Additional requirements are left to be set by individual departments. Applicants should refer to the corresponding department.

### Deadlines

The complete application must be received by the below dates for full consideration

- November 30 for admission in Spring semester
- June 30 for admission in Fall semester